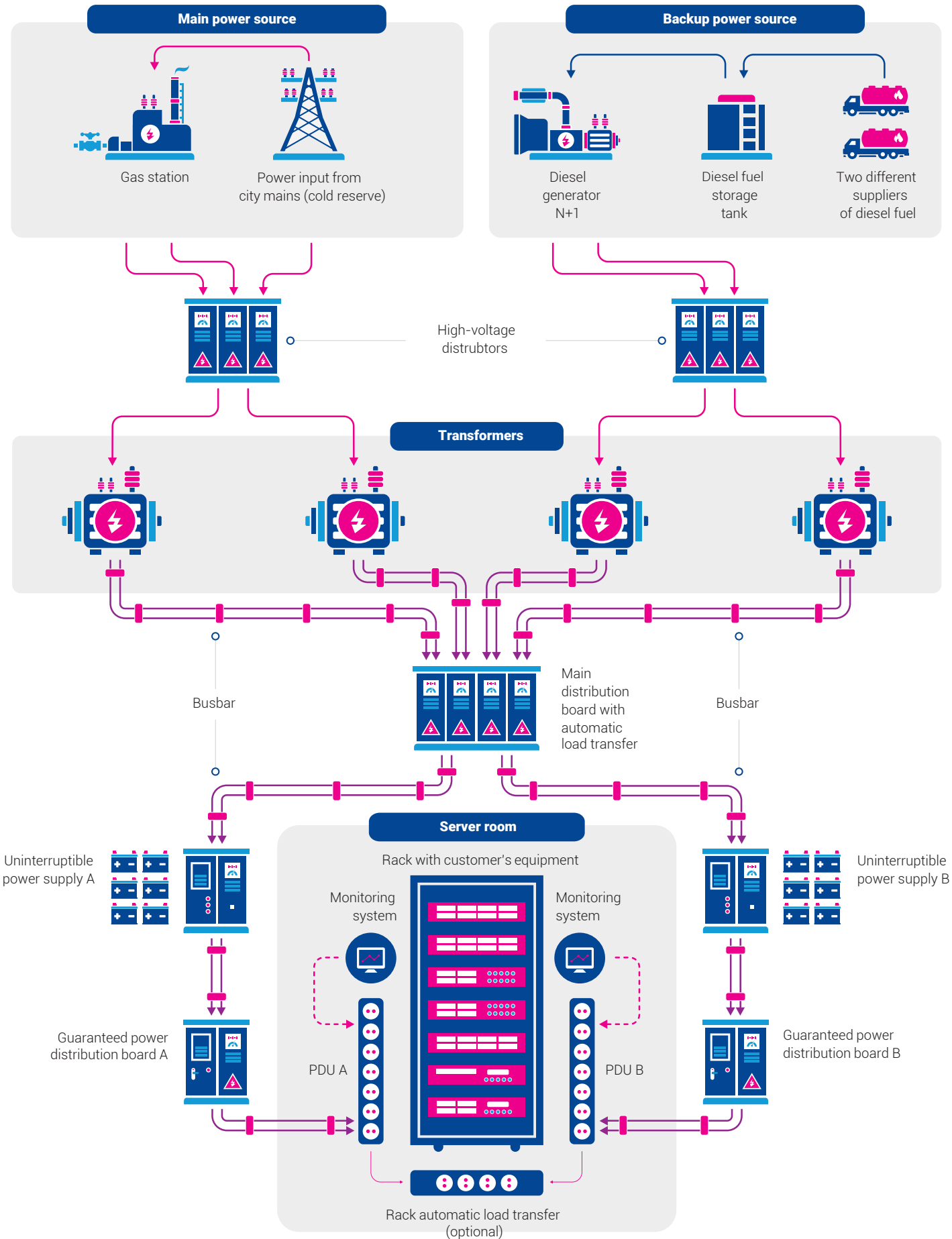


## KEY TECHNICAL CHARACTERISTICS

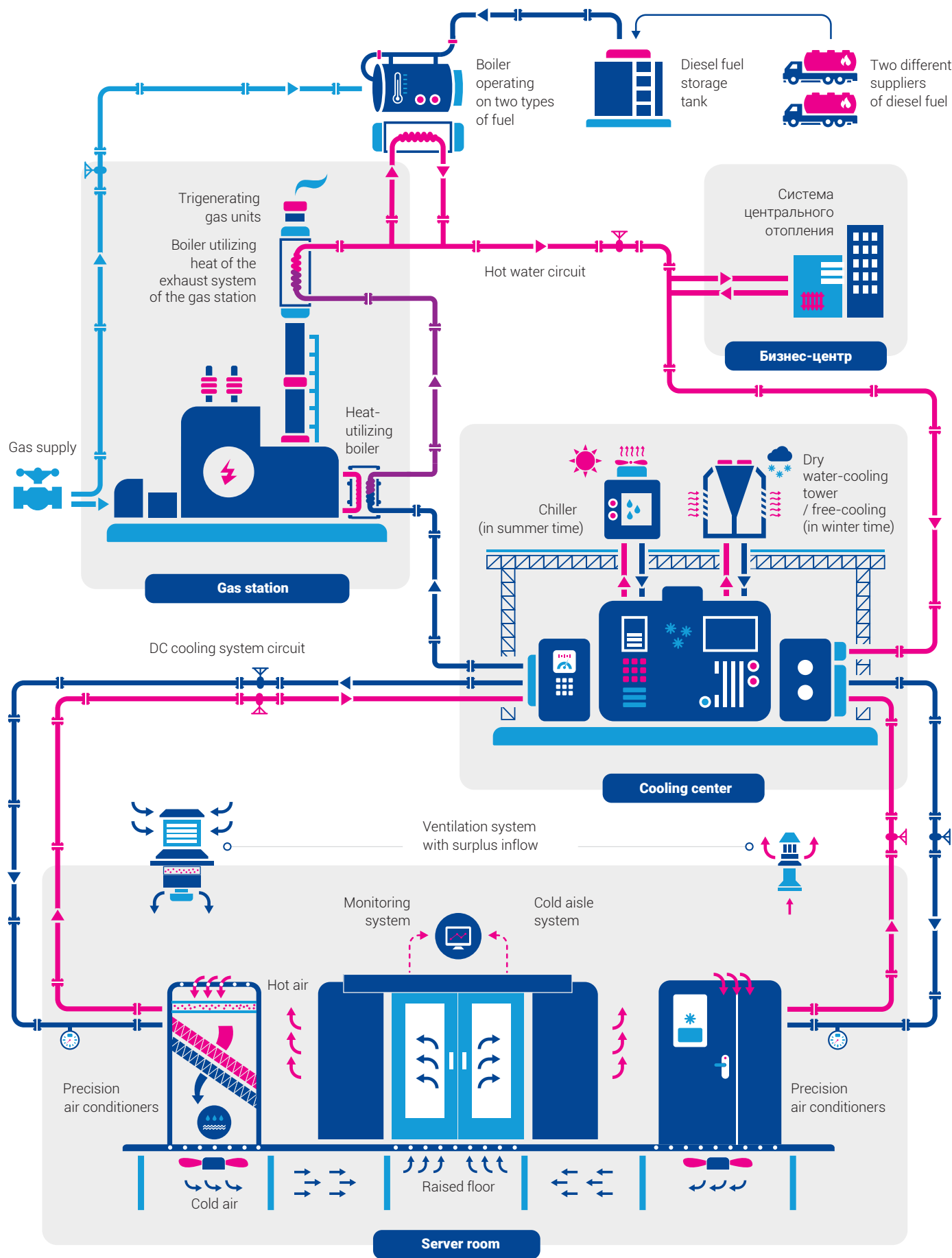


<b>Total area</b>	<ul style="list-style-type: none"> <li>9,000 sq. m</li> </ul>
<b>Project capacity</b>	<ul style="list-style-type: none"> <li>12 MW</li> <li>Complies with TIER III</li> </ul>
<b>Reliability level</b>	<ul style="list-style-type: none"> <li>Management &amp; Operations Stamp of Approval</li> </ul>
<b>Certification</b>	<ul style="list-style-type: none"> <li>ISO 27001:2013</li> <li>ISO 9001:2015</li> <li>PCI DSS v3.2</li> <li>DC Manager certified by Uptime Institute (Accredited Operations Specialist)</li> <li>Attestation by FSTEK for personal data storage</li> <li>License by FSB Russia for data encryption (cryptography)</li> </ul>
<b>Main power supply system</b>	<ul style="list-style-type: none"> <li>2 entries from the gas power station</li> <li>1 city entry to the gas power station</li> <li>N+1 redundancy scheme</li> </ul>
<b>Backup power supply system</b>	<ul style="list-style-type: none"> <li>UPS with 2N redundancy scheme</li> <li>3 Cummins diesel generators with N+1 redundancy scheme</li> <li>Contracts with two different diesel fuel suppliers</li> </ul>
<b>Cooling system</b>	<ul style="list-style-type: none"> <li>Two-circuit system using chillers, high precision air conditioners and free cooling</li> <li>2N and N+1 redundancy schemes</li> </ul>
<b>DC management system</b>	<ul style="list-style-type: none"> <li>BMS Schneider Electric StruxureWare</li> </ul>
<b>Security</b>	<ul style="list-style-type: none"> <li>6 security circuits</li> <li>CCTV system</li> <li>Physical security with regular rounds</li> <li>Access control system based on electronic passes and biometric data</li> <li>Automated key release system based on biometric data</li> <li>Installation of additional customer security circuits</li> </ul>
<b>Fire-extinguishing system</b>	<ul style="list-style-type: none"> <li>Automatic gas fire-extinguishing system FM 200</li> </ul>
<b>Connectivity</b>	<ul style="list-style-type: none"> <li>Direct connection to SPB-IX</li> <li>2 diverse optic circuits to the local points of traffic exchange</li> <li>More than 20 carriers</li> </ul>

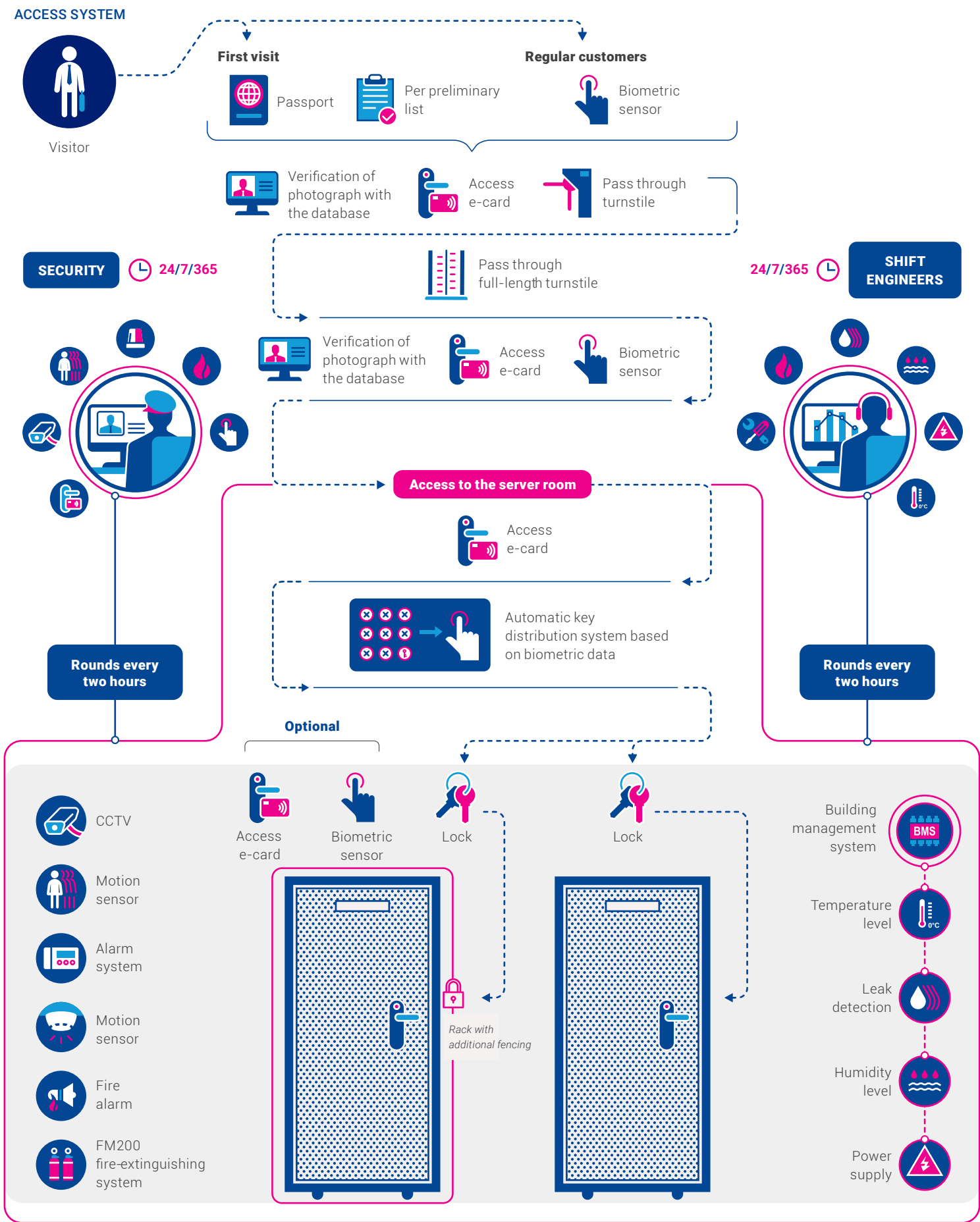
POWER SUPPLY SYSTEM LAYOUT



COOLING SYSTEM LAYOUT



SECURITY SYSTEM



TELECOM NETWORK LAYOUT

