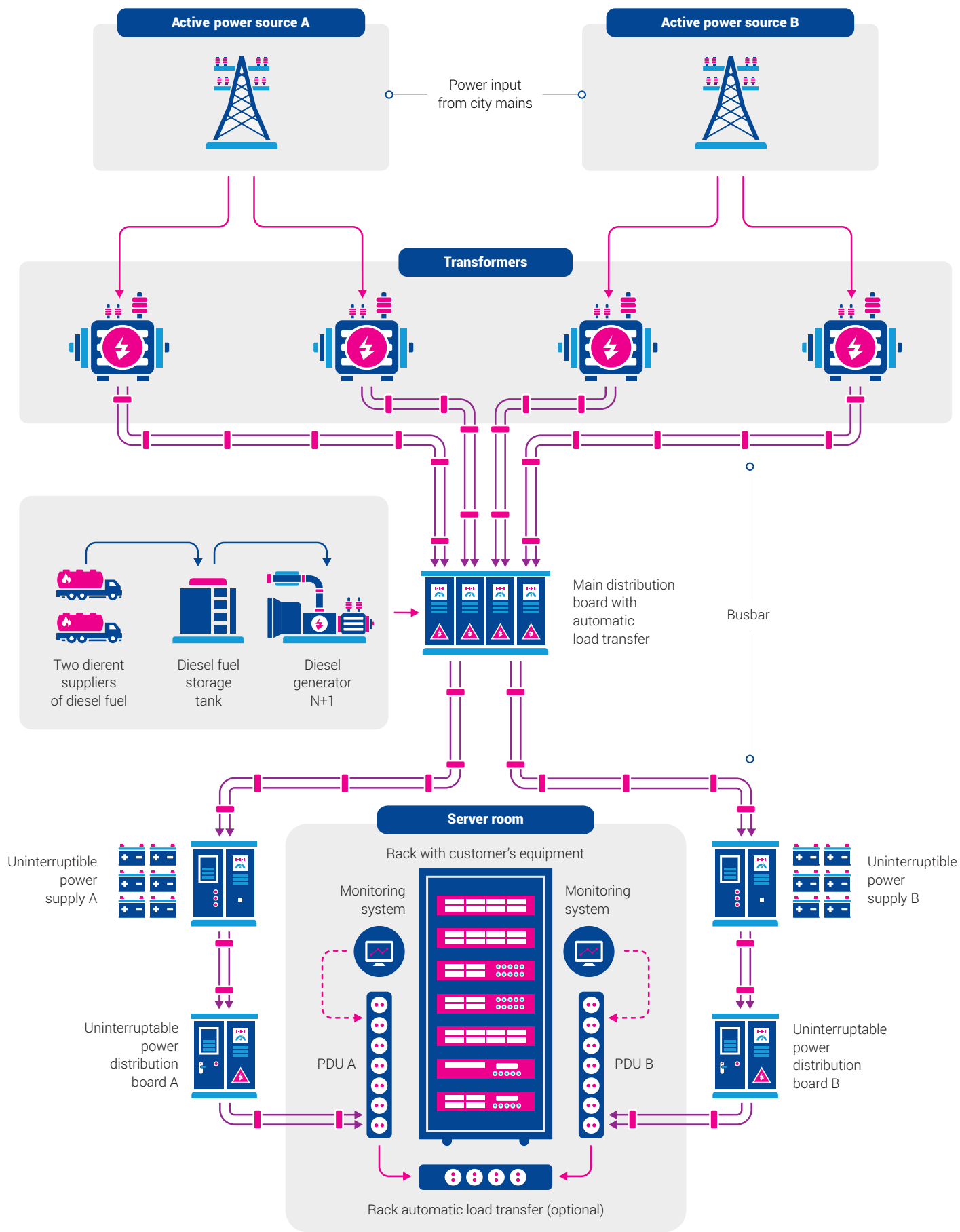


## KEY TECHNICAL CHARACTERISTICS

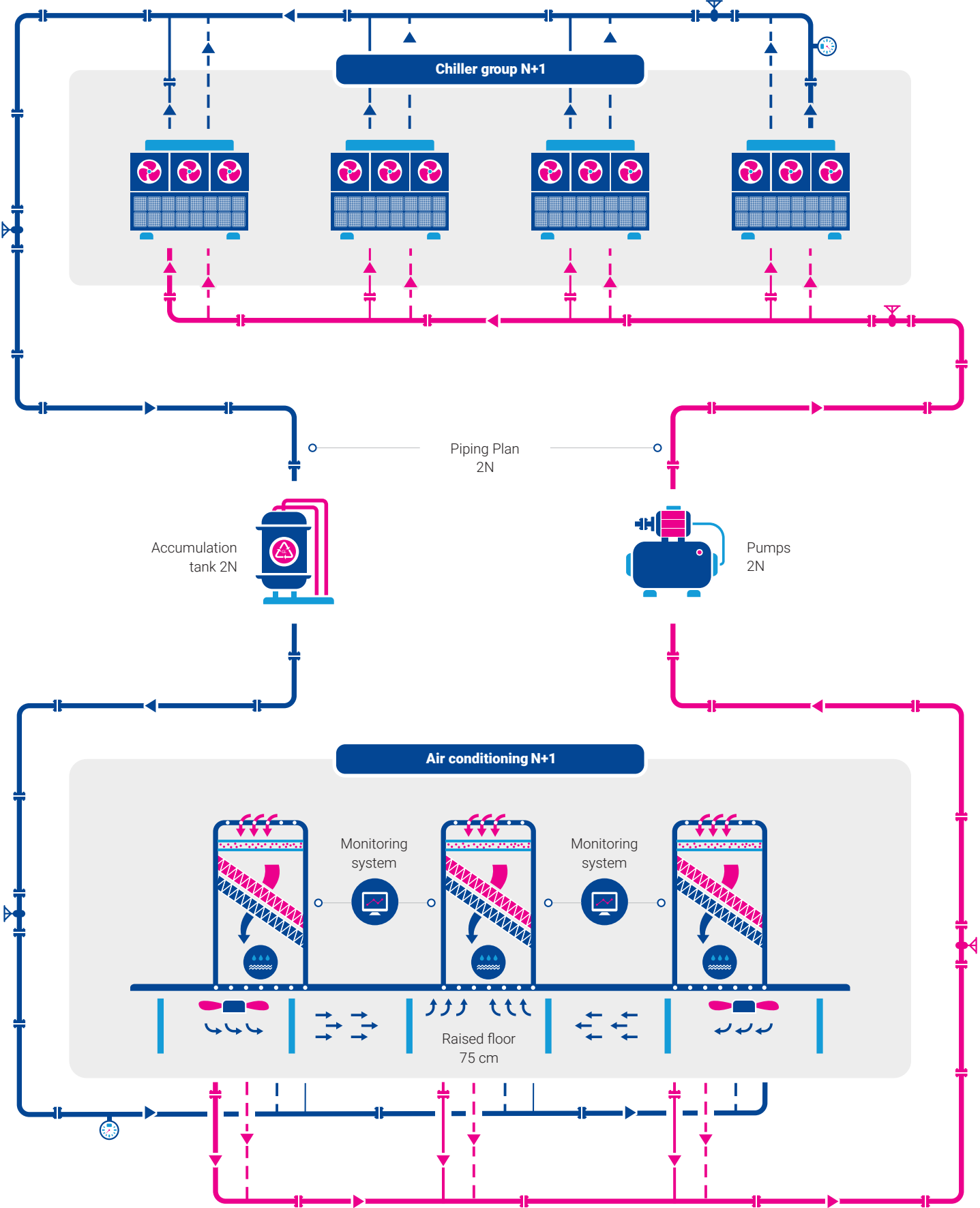


<b>Total area</b>	<ul style="list-style-type: none"><li>• 4,400 sq. m</li></ul>
<b>Project capacity</b>	<ul style="list-style-type: none"><li>• 5 MW</li></ul>
<b>Reliability level</b>	<ul style="list-style-type: none"><li>• Complies with TIER III</li></ul>
<b>Certification</b>	<ul style="list-style-type: none"><li>• ISO 27001:2013</li><li>• ISO 9001:2015</li><li>• PCI DSS v3.2</li><li>• DC Manager certified by Uptime Institute (Accredited Operations Specialist)</li><li>• Attestation by FSTEK for personal data storage</li><li>• License by FSB Russia for data encryption (cryptography)</li></ul>
<b>Main power supply system</b>	<ul style="list-style-type: none"><li>• 4 entries from two independent power substations</li><li>• 2N redundancy scheme</li></ul>
<b>Backup power supply system</b>	<ul style="list-style-type: none"><li>• UPS with 2N redundancy scheme</li><li>• 9 diesel generators</li></ul>
<b>Cooling system</b>	<ul style="list-style-type: none"><li>• Two-circuit system using chillers, high precision air conditioners and free cooling</li><li>• 2N and N+1 redundancy schemes</li></ul>
<b>DC management system</b>	<ul style="list-style-type: none"><li>• BMS Beckhoff</li></ul>
<b>Security</b>	<ul style="list-style-type: none"><li>• CCTV system</li><li>• Physical security with regular rounds</li><li>• Access control system based on electronic passes</li><li>• Installation of additional customer security circuits</li></ul>
<b>Fire-extinguishing system</b>	<ul style="list-style-type: none"><li>• Automatic gas fire-extinguishing system Novec 1230</li></ul>
<b>Connectivity</b>	<ul style="list-style-type: none"><li>• Location of M8 node</li><li>• Optic circuits to M9 and M1</li><li>• Direct connection to MSK-IX</li><li>• More than 40 carriers</li></ul>

POWER SUPPLY SYSTEM LAYOUT

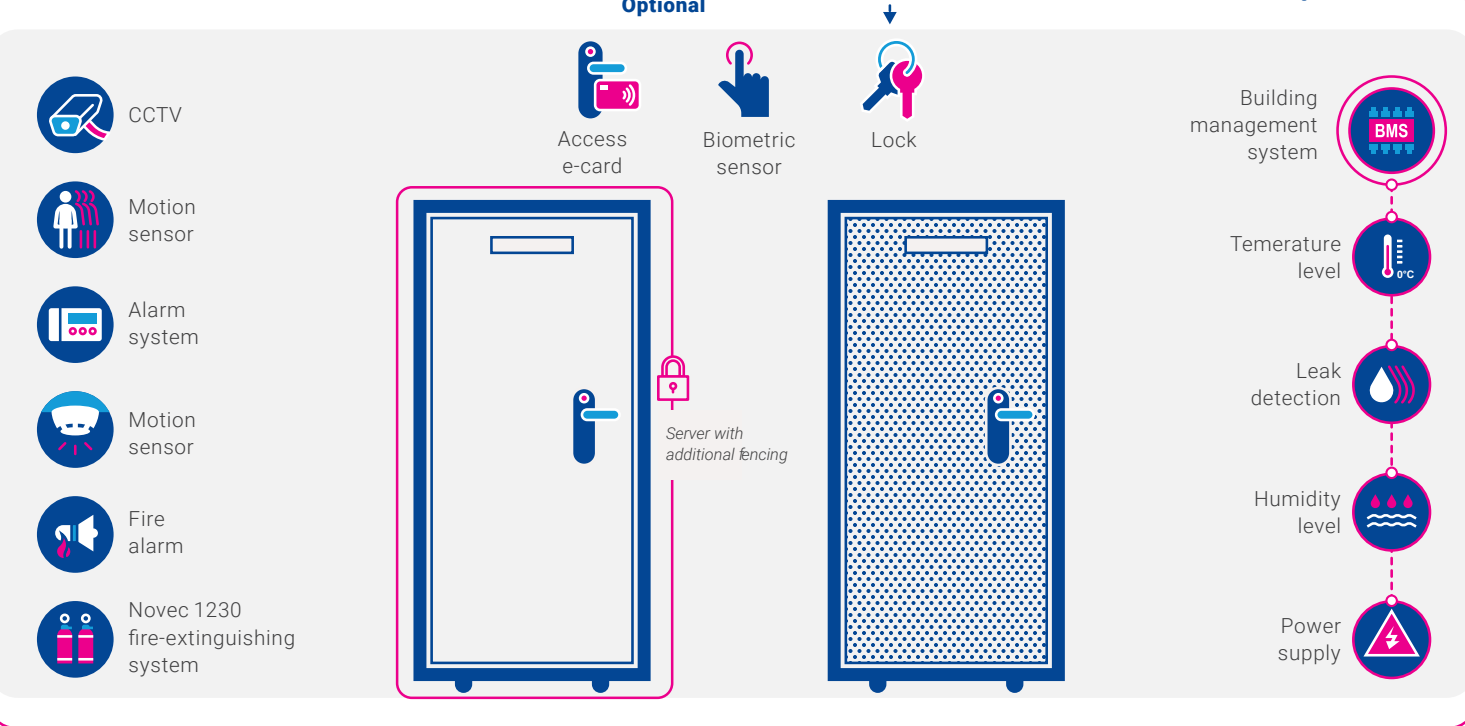
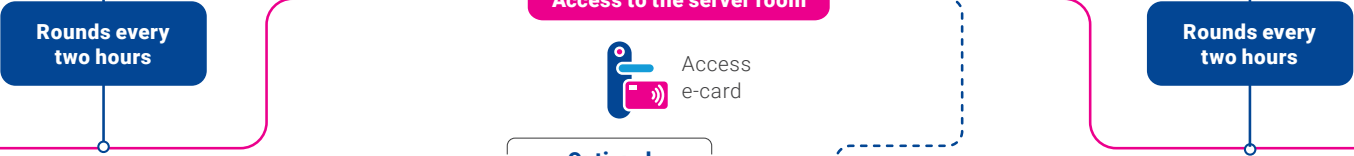
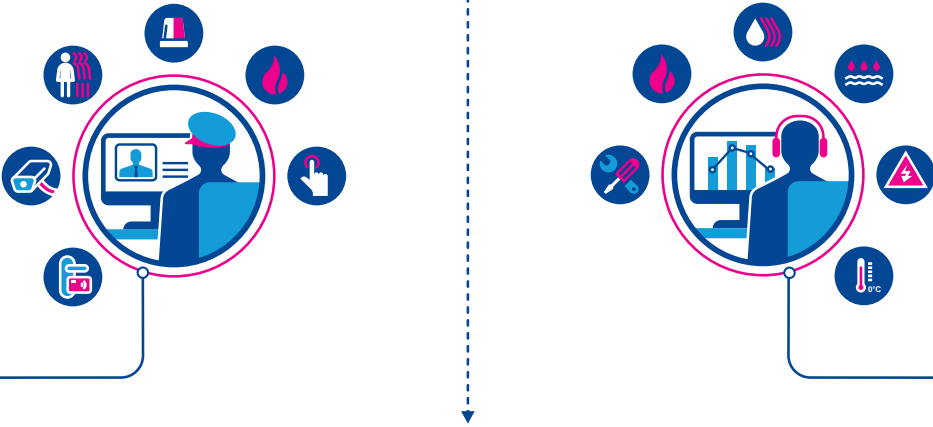
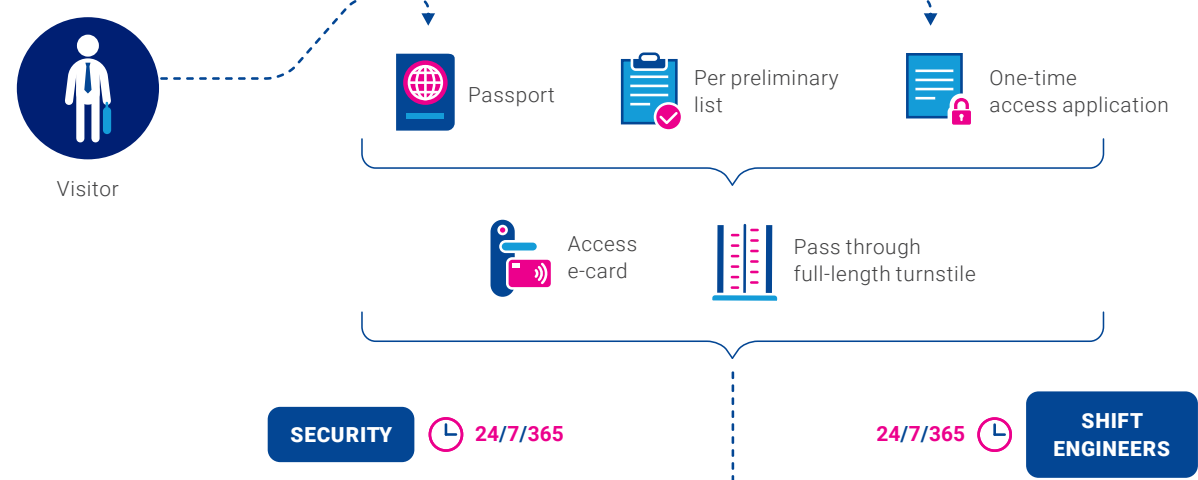


COOLING SCHEME



SECURITY SYSTEM

ACCESS SYSTEM



NETWORK SCHEME

